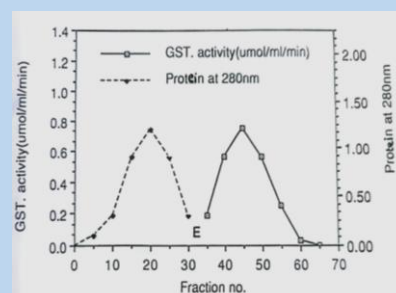


Purification and Characterization of Rabbit Liver Glutathione S-Transferase

Ahmad A. Hadidi^{1,*} and Abdelrahim A. Hunaiti²

Type: Full Article. Received: 22nd Dec. 2024, Accepted: 29th Jan. 2025, Published: xxxx, DOI: xxxx

Abstract: Glutathione S-transferases (GSTs) are key enzymes in detoxification, catalyzing the conjugation of glutathione (GSH) to harmful electrophilic compounds, thereby enhancing their solubility for excretion and protecting cells from oxidative stress and chemical damage. These enzymes are especially abundant in detoxification organs like the liver. In this study, GSTs were purified from rabbit liver with 22-fold purity and 78-80% yield. The enzyme activity, measured using 1-chloro-2,4-dinitrobenzene, resulted in a specific activity of 91 $\mu\text{mole}/\text{min}/\text{mg}$ protein. Gel filtration revealed a native molecular weight of approximately 50,000. SDS-PAGE showed two distinct subunits (28,000 and 27,000 Da), and chromatofocusing resolved eight isoenzymes with pI values ranging from 7.96 to 9.6. The primary isoenzyme (pI 8.6) accounted for 94% of the activity. The enzyme exhibited optimal activity at pH 6.5, with 50% activity retained after eight days at room temperature. GSTs demonstrated higher conjugation rates with substrates like 1,2-epoxy-3-(nitro phenoxy) propane and ethacrynic acid. These findings offer insights into the structural diversity, enzymatic properties, and functional roles of GSTs in rabbit liver, contributing to the broader understanding of detoxification and cellular regulation in animal tissues.



Keywords: Glutathione S-Transferases, GST, Affinity Chromatography, Chromatofocusing, CDNB, Sustainable Detoxification, Environmental, Pollution, SDG3.

INTRODUCTION

Glutathione-S-transferases (GSTs, EC 2.5.1.18) are multifunctional enzymes involved in the detoxification of a wide array of xenobiotics and endogenous compounds.

These enzymes play critical roles through their catalytic and non-catalytic activities, contributing significantly to cellular protection from oxidative stress, inflammation, and tissue damage (1, 2, 3). GSTs catalyze the conjugation of the tripeptide glutathione (GSH) to electrophilic substrates, facilitating their excretion or neutralization (4). Moreover, GSTs exhibit various non-catalytic roles, including involvement in signal transduction, apoptosis, and cellular transport, underscoring their broad functional significance (5, 6).

The protective role of GSTs against oxidative damage has been well-established, with GSTs acting as a first line of defense against reactive oxygen species (ROS) and other free radicals generated during normal metabolism or in response to environmental toxins (7). In particular, GSTs are critical in protecting tissues, especially the liver, which is exposed to various endogenous and exogenous toxicants (8). Over the years, a diverse array of GST isozymes has been isolated from various species, primarily from human, rat, and mouse liver tissues, revealing considerable functional diversity across these forms (9). These isozymes are categorized into different classes based on their substrate specificity, immunological properties, and amino acid sequences (10).

Recent studies have explored the similarities and differences between the GST isozymes present in the livers of mammals,

including the functional variations that exist between species. For instance, Dai et al. (8) identified notable differences in the GST isoforms between species, with some isozymes exhibiting distinct affinities for specific substrates, such as xenobiotics and endogenous molecules like bilirubin. In the rat liver cytosol, at least

12 electrophoretic forms of GST have been documented, each exhibiting different properties and substrate

preferences (11, 12, 13, 14). This variety suggests that gene duplication and subsequent divergence have played significant roles in the evolution of the GST superfamily, contributing to their functional complexity (15).

The interaction of GSTs with bilirubin has garnered particular attention due to its potential involvement in bilirubin metabolism and detoxification. Several studies have demonstrated that GSTs, especially those in the liver, exhibit a strong affinity for bilirubin, and recent investigations suggest that bilirubin binding occurs not only at the catalytic site but also at other distinct regions of the enzyme (16, 4). This indicates a broader role for GSTs in the regulation of bilirubin levels and highlights the potential therapeutic implications for diseases associated with bilirubin accumulation, such as jaundice and certain types of liver dysfunction.

In this study, we describe the purification and characterization of various glutathione S-transferase forms from rabbit liver, expanding on the previous work done in other species. We provide evidence of immunological similarities between the electrophoretic forms of the enzyme, furthering our

¹ Department of Basic Medical Sciences, Faculty of Nursing, Irbid National University, Irbid, Jordan

* Corresponding author: a.hadidi@inu.edu.jo

² Secretary General Assistance for Arab Universities Association July 1st 2018- Present, Amman, Jordan. hunaiti2001@gmail.com

understanding of GST diversity in non-human species. Additionally, the impact of specific chemical inhibitors on GST activity in rabbit liver is investigated, offering insights into the modulation of GST function and its potential therapeutic applications in oxidative stress-related conditions.

Materials and Methods

Materials

Animal and tissue

One-year-old white rabbits (*Lepus arabis*) were obtained from the Yarmouk University animal house. Immediately after the animals were killed, fresh liver was removed packed in ice brought to the laboratory, and either processed directly or frozen at -20°C until use. For antibody production, 4-month white rabbits raised and bred at Yarmouk University animal house were used.

Chemicals

Reduced glutathione (GSH), reduced glutathione-linked agarose, gel filtration protein standard, SDS-electrophoresis protein standards, sodium dodecyl sulfate (SDS), commassie brilliant blue R-250, Tris-base, bovine serum albumin (BSA), complete and incomplete Freund's adjuvants, sodium azide, B-mercaptoethanol, acrylamide, N, N- ethylene bisacrylamide, sephadex G-100 were purchased from sigma chemical company (Mo, USA). 1-Chloro-2,4-dinitrobenzene (CDNB). Bromophenol blue was obtained from BDH laboratory reagents (England).

Polybuffer exchange94 and polybuffer74 were ordered from Pharmacia Fine Chemicals (Uppsala, Sweden). Tetramethylethylene-diamine was purchased from Bethesda Research Laboratories (USA). Barbitol buffer was purchased from Gelman (USA). The herbicide (oxadiazolone) was obtained from Supleco Inc. (Switzerland), and the insecticide (diazinone) was obtained from Societ de usine chimiques Rhone poulenc (France).

All other chemicals were obtained from commercial sources and of high purity available.

Methods

Tissue Extract Procedure

A quantity of 20 g of rabbit liver was chopped into small pieces, combined separately with 0.1 M potassium phosphate buffer pH 6.5 (1:2 w/v), and homogenized for one minute at maximum speed in a Waring blender. All subsequent procedures were completed at 0–4°C unless otherwise noted. Glass wool was used to filter the supernatant after the homogenate was centrifuged at 37,000 Xg for 30 minutes using an MSE.Europa24 M centrifuge. The pellet was then disposed of.

Assay of GST

The activity of glutathione S-transferase toward 1,2-chloro-2,4-dinitrobenzene, 2,4-dichloronitrobenzene, p-nitrobenzylchloride, p-nitrobenzoyl azide, ethacrynic acid, 1,2-epoxy-3-(p-nitrophenoxy) propane, and 5, β -androstan-3, 17-dione was measured spectrophotometrically using a PYE Unicam SP 8-400 spectrophotometer.

In accordance with the description provided by Habig et al. (1974), the unit of $\mu\text{mol}/\text{min}$ was the measurement of enzyme activity at 25°C, and $\mu\text{mol}/\text{min}/\text{mg}$ protein was the expression of specific activity. Using the method of Lowry et al. (1951) and bovine serum albumin as the standard, the concentration of proteins was measured.

Purification of Glutathione S-transferase

Swollen-reduced glutathione agarose beads were placed in a 1×5cm column after being swollen in 0.1M potassium phosphate buffer pH 6.5. At a flow rate of 30 mLs per hour, the column was equilibrated using the same buffer. A 20 ml per hour

flow rate of 37000 xg. The supernatant (400 mg proteins) was introduced into the column. The protein absorbance at 280 was then completely cleaned off the column using an equilibrating buffer until it reached zero again. To get rid of the nonspecifically bound proteins, the column was again washed with 100 mLs of the same buffer that contained 0.2 mL of NaCl. Then, using 50 mM Tris-HCl buffer pH 9.6 with 10 mM reduced glutathione, the enzyme was eluted. The fractions (2 ml each) with the highest enzyme activity were combined and dialyzed against 40 volumes of 0.1M potassium phosphate buffer pH 6.5 for 14 hours straight. Amicon pM 30 membrane was used for ultrafiltration to concentrate the enzyme.

Separation of isoenzymes by chromatofocusing

Chromatofocusing was carried out according to the directions provided by the manufacturer (Pharmacia). After the enzyme from rabbit liver was isolated using affinity chromatography as previously mentioned, it was applied individually to a chromatofocusing column (0.9 × 30 cm) that was filled with poly buffer exchanger-94gel. The enzyme was concentrated to around 2 ml using an Amicon PM 30 membrane. A 0.025M tris-HCl buffer with a pH of 9.4 was used to preequilibrate the column. 270 mLs of pH 4.0 poly buffer (94: H2O) were used to elute the transferase. Each of the two-mL portions underwent an activity assay, and the pH of each fraction was promptly noted. Affinity chromatography was used to separate the poly buffer from the mixture of fractions with the highest enzyme activity.

Determination of Molecular Weight

12% SDS-polyacrylamide gel electrophoresis, as described by Laemmli (1970), was used to estimate the molecular weight of the subunits of the glutathione S-transferase purified from the rabbit liver. The protein standards used in this process were phosphorylase B (94,000), bovine serum albumin (67,000), egg albumin (43,000), carbonic anhydrase (30,000), soybean trypsin inhibitor (20,100), and lactalbumin (14,400).

Antibody Production

Rabbits were used to produce antibodies against pure glutathione S-transferase from their livers, exactly as described by Hunaiti and Kolattukudy (1984). The isolated enzyme (around 350 μg) was well combined with the complete adjuvant (1:1v/v) of Freud. The resulting emulsion (0.9ml) was then injected (125 μg) at two-week intervals with the incomplete adjuvant (1:1v/v). The rabbit was bled two weeks following the second injection, and the antiserum was extracted using centrifugation at 4000 xg for ten minutes.

By using immunotitration, It was determined how the anti-enzyme from rabbits affected the enzymatic action. 200 μl of antiserum at varying doses was used to incubate aliquots (20 μg) of the enzyme, which were then diluted to 15 μl using rabbit serum as control. Using 1-chloro-2,4-dinitrobenzene as a substrate, the enzymatic activity in the supernatant was measured 10 minutes after 5 hours at 4°C.

Ouchterlony double immunodiffusion

The Ouchterlony double diffusion was performed on microscope slides using 1% agarose on 75mM barbital buffer pH 8.8, containing 0.02% sodium azide. The mixture was boiled and poured onto microscopic slides. Wells of 2 or 4 mm diameter were punched in the gel, and 10ml of crude extract from the rabbit liver was added to the outer wells and 15 μl of each antiserum to the center well. The slide was allowed to develop for 24-48 hours in a humid atmosphere. The slide was then washed with 0.9% NaCl in distilled water and stained with 0.1% Coomassie brilliant blue R-250, containing 5% acetic acid.

Inhibition study

Solutions of sodium azide, bromophenol blue, and bisacrylamide were prepared in ethanol and used to inhibit the enzyme from the rabbit liver. Two different concentrations of each inhibitor (1 and 2mM final concentration) were used 20µg of the enzyme was incubated for 10 min with the inhibitors and 0.1mM reduced glutathione in a total volume of 3ml made up with 0.1M potassium phosphate buffer pH 6.5. After the incubation period, the reaction was started by the addition of 1Mm 1-chloro-2,4-dinitrobenzene, and the enzyme activity was measured as described above. Controls without inhibitors were accompanied by each assay.

RESULTS

Glutathione S-transferase activity in the rabbit liver

Crude extracts prepared from rabbit liver contained GST activity. The specific activity of the enzyme was evaluated using CDNB the most commonly used substrate. It was found that rabbit liver had a specific activity of 4.13µmole/min/mg.

Purification of glutathione S-transferase

Using glutathione linked agarose, a fast purification process was used to extract the glutathione S-transferase enzyme from the liver tissue in order to learn more about the nature of the enzyme's expressed activity.

After the rabbit liver's 37,000 xg supernatant is directly added to the affinity column, all glutathione S-transferase activity was retained by the column but not the bulk of the proteins (Fig.1)

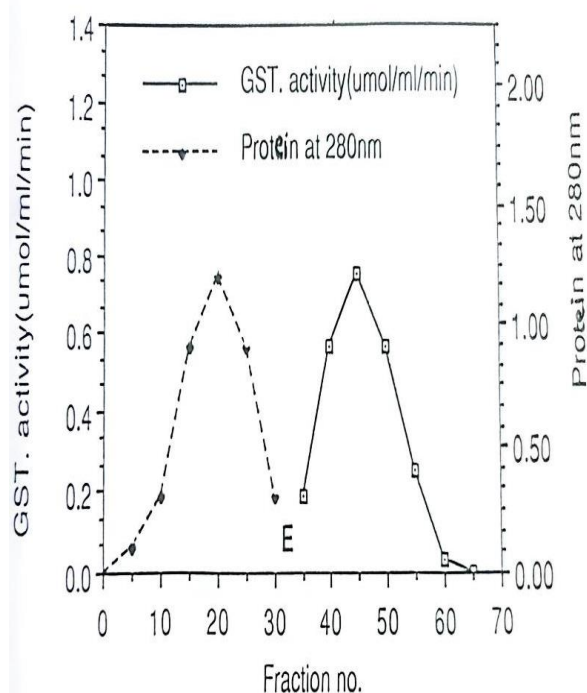


Figure (1): Purification of rabbit liver glutathione S-transferase by glutathione-linked agarose affinity chromatography.

Protein was measured at 280nm after 1:40 dilution with 0.1M potassium phosphate buffer pH 6.5.

E: elution buffer

- Other experimental details are given in the text.

The enzyme was successfully recovered in a single sharp peak by 10 mM reduced glutathione in 50mM Tris-HCl buffer pH 9.6 (fig.2). This purification procedure resulted in over 78% recovery of the applied glutathione S-transferase activity from rabbit liver and about 22 purification fold Table 1.

Table (1): Glutathione S-transferase purification from rabbit liver. In the text, experimental details are provided.

Fraction	Total protein (mg)	Total activity µmole/min	Specific activity µmole/min/mg protein	Purification (fold)	Yield %
Supernatant	346	1430	4.13	1	100
Affinity chromatography	12.36	1120	90.61	22	78.3

Following a 2-minute preincubation period with inhibitors and 1 mM GSH at room temperature, the enzyme (30µg) in 3 ml of 0.1 M potassium phosphate buffer pH 6.5 was exposed to the reactions. 1 mM 1-chloro-2,4-dinitrobenzene was then added.

Purified rabbit liver glutathione S-transferase had high specific activity. It appeared from the results that rabbit liver enzyme constituted about 4.6% of soluble protein. The elution pattern for the glutathione S-transferase from the liver tissue on the affinity chromatography is given in (Fig 1).

Effect of pH on Glutathione S-transferase activity

The effects of pH on the rate of glutathione conjugation with CDNB was studied for the liver purified glutathione S-transferase.

In all cases below pH 5 the transferase activity was low and as the pH increased the rate of reaction increased reaching a pH optimum for the rabbit liver enzyme around 6.5 (Fig2).

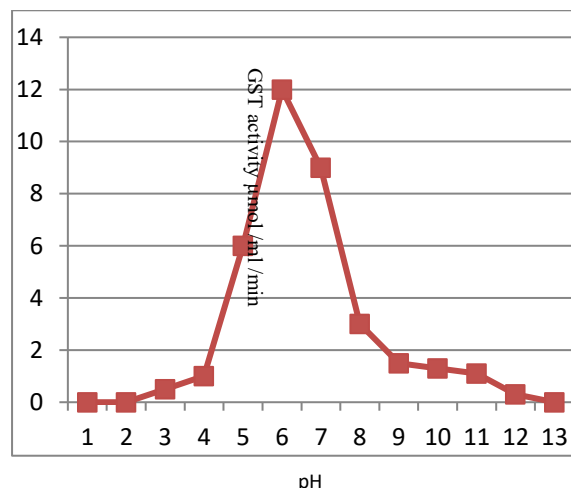
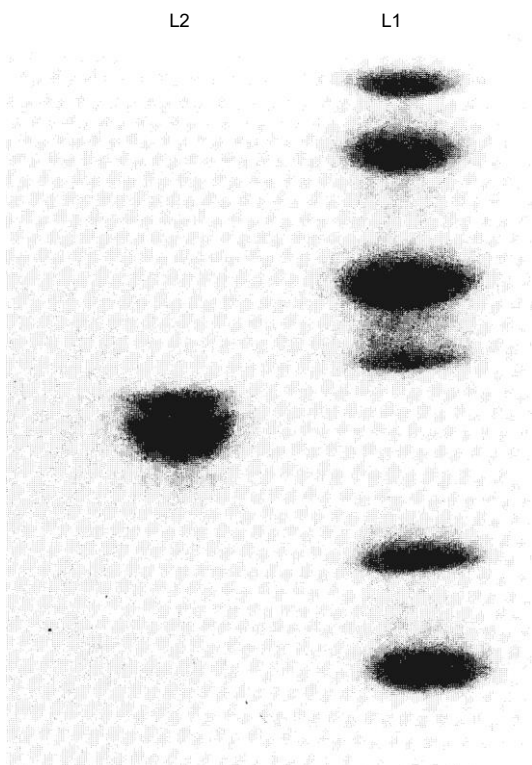


Figure (2): The effects of pH on glutathione S-transferase activity in the liver of rabbit.

Glutathione S-transferase subunit composition

12% SDS-polyacrylamide gel electrophoresis was used to assess the purity of the glutathione S-transferase that was extracted from the affinity column. According to (Fig.3). On a 12% SDS-polyacrylamide gel electrophoresis, the rabbit liver



enzyme showed two bands of protein. These bands had molecular weights of 28,000 and 27,000, according to a linear plot of log molecular weight against standard protein mobilities (Fig. 3).

Figure (3): Glutathione S-transferase from purified rabbit liver separated by 12% SDS-gel electrophoresis. Standard protein indicators are located in Lane 1 and pure rabbit liver enzyme is located in Lane 2. The text includes experimental details.

Resolution of the Isoenzymes

Eight peaks of activity were identified in the transferase using an isoelectric fractionation using Sephadex polybuffer exchanger 94 (Fig.). At a pH of approximately 8.7, the majority of rabbit liver GST isozymes showed strong activity.

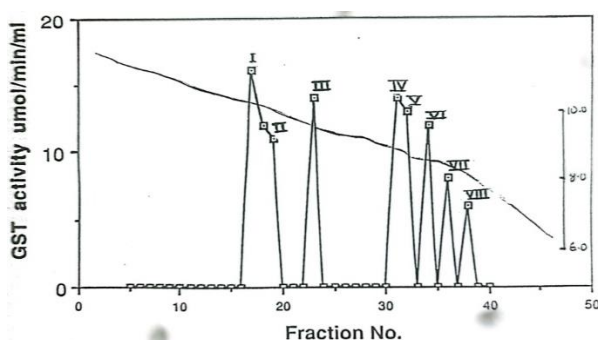


Figure (4): Purification of various isoenzymes of rabbit liver glutathione S-transferase by chromatofocusing Peak I (pI 9.6), Peak II (pI 9.2), Peak III (pI 8.6), Peak IV (pI 8.3), (Peak V (pI 8.1), Peak VI (pI 8.05), Peak VII (7.8), Peak VIII (7.5)

Substrate specificity

The main liver isoenzyme of rabbits (pI 8.4) showed maximum conjugation rates with GSH when 1-chloro-2,4-dinitrobenzene was used as a substrate (Table 2). However, it also utilized alternative substrates at lower efficiency. For ethacrynic and 1,2-epoxy-3-(p-nitrophenoxy) propane, no

appreciable rate was observed. The other isoenzymes' substrate specificity was not determined because of their limited availability.

Table (2): Substrate specificity of the primary glutathione S-transferase isoenzyme of rabbit liver.

Substrate	Concentration (mM)	Rabbit Liver	% relative activity
1-chloro-2,4-dinitrobenzene	1.0	100	100
1,2-epoxy-3-nitrophenoxy) propane	5.0	6.8	18
Ethacrynic	0.2	0.95	17.5

Enzyme (30~g) was preincubated for 2 minutes at room temperature with inhibitors and 1 mM GSH in 3 ml of 0.1 M potassium phosphate buffer pH 6.5. The reactions were then started by adding 1 mM 1-chloro-2,4-dinitro benzene.

Catalytic properties

For a minimum of 7 minutes and 10 µg of protein per mL, the enhanced enzyme's quantifiable activity was linear. The subsequent studies employed only the initial velocities and were all conducted within the linear range of time and protein.

Ouchterlony

The Ouchterlony double-diffusion research Revealed the presence of the rabbit antibody Produced against the principal peak (pI 8.7) of the chromatofocusing column.

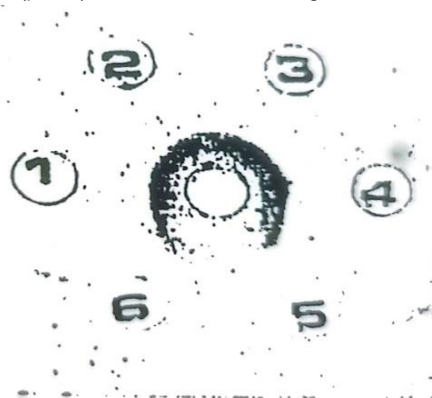


Figure (5): 5 Analysis of double diffusion in Ouchterlony. Rabbit antiserum produced against the primary isoenzyme (pI 8.7) was present in the center well in amounts of 20µl, whereas the purified isoenzyme was found in increasing amounts in the outside wells 1, 2, 3, 4, 5, and 6.

The antigen, which can be an unprocessed or pure enzyme, generated a single precipitin line (Fig. 5). Similarly, chromatofocusing separated the remaining six enzyme peaks, and each of those peaks produced a single precipitin line from the antibody. The chromatofocusing-obtained seven electrophoretic forms show no spurs and completely merged immunoprecipitation lines, suggesting that they are immunologically quite similar.

Inhibitors

The rabbit enzyme was employed pH idy inhibitors from several sources that are known to impact ansferases (Table 3). The thiol-directed reagent iodoacetamide and the probable substrate N-(4-bromobutyl) phthalimide significantly reduced the enzyme activity, although the other reagents showed inhibition at relatively high doses (Table 3).

Table (3): Inhibitors' effects on glutathione S-transferase in pure rabbit liver.

Inhibitors	(%) of Rabbit liver GST inhibition
Sodium azide 1 mM	40.8
Sodium azide 2 mM	63.6
Bromophenol blue 1 mM	79.5
Bromophenol blue 2 mM	84.3
Bisacrylamide 1mM	33.4
Bisacrylamide 2mM	53.2

Discussion

This paper first described the process of purifying glutathione S-transferase from rabbit liver, which enabled us to compare the rabbit liver enzyme with those from other mammalian sources (1, 2, 3, 4). The GSH-S-transferases identified in rabbits and rat liver (5, 6) differ in their subunit makeup. Rat liver enzymes are heterotrimers made up of subunits with molecular weights of 22,000, 23,500, and 25,000. On the other hand, rabbit GSH-S-transferases are heterodimeric proteins with subunits of molecular weights 28,000 and 27,000, respectively, and native molecular weights of approximately 54,000 and 53,000.

The subunit composition of rabbit enzymes is fairly similar to that of the human transferases currently in use as well as the GSH-transferases that have been isolated from sheep and human liver (7, 8, 9). With subunit molecular weights ranging from 22,500 to 26,000, these enzymes are heterodimers (10, 3). One interesting characteristic of glutathione S-transferase, which was isolated from the livers of various mammals, is the fact that it has multiple isozymes that can conjugate GSH with distinct electrophiles. Comparable to this, rabbit liver contains the enzyme in at least seven different electrophoretic forms (11).

Chromatofocusing approaches can be utilized to separate these isoenzymes, which may not be effective in ion exchange chromatography, as described for other mammalian sources. The immunological relationship between rabbit liver enzymes and human liver isoenzymes is similar, as demonstrated by the fact that antibodies raised against the major electrophoretic form (pI 8.7) of the rabbit enzymes cross-reacted with all seven forms of the enzyme (12, 7, 13). This is in contrast to liver enzymes from rats or mice. If the eight transferases present in rabbit liver exist at all, it is unclear how they relate to one another. All seven may have diverged from a single gene from a common ancestor. In that instance, the antigenic characteristic was preserved. Reddy et al. (10) noted that isoenzyme C-4 in sheep liver and GSH-transferase in rabbit liver have a large variance, despite the paucity of data. The two kinds of enzymes differ somewhat from one another in terms of their sizes, isoelectric points, and substrate specificities.

Isoelectrophoretic fractionation of rabbit liver GSH-transferases produced a well-defined pattern of isoenzyme distribution. Generally speaking, rabbit liver GST isozymes are highly active at pI of 8.7 (Fig. 4). Due to its strong binding affinity through hydrophobic, aromatic, and electrostatic interactions, structural compatibility with the enzyme's active site as demonstrated in Table 3, and capacity to induce conformational changes that lower enzymatic activity, 2 mM of bromophenol blue (BPB) is an effective inhibitor of glutathione S-transferase. Because of this, BPB is an invaluable tool for studies and potential therapeutic uses involving GST inhibition (14). Even yet, great care was taken to wash the chromatofocusing column with a lot of salt. It is currently unclear how the seven different variants of rabbit GSH-transferase differ from one another in terms of substrate specificities and electrophile inducibility. Nevertheless, the current findings detail the first purification and division of the several GSH-transferase forms from rabbit tissue.

DISCLOSURE STATEMENT

- **Ethics approval and consent to participate:** Not applicable
- **Consent for publication:** Not applicable
- **Availability of data and materials:** The raw data required to reproduce these findings are available in the body and illustrations of this manuscript are available in the body and illustrations of this manuscript.
- **Author's contribution:** The first version of the document was written by Al Hadidi. Hunaiti was in charge of

overseeing the organization of research activities and the primary conceptual ideas. Al Hadidi and Hunaiti were the ones who carried out the experiment. Explanation of the data, experimental design, and outcomes Al Hadidi and Hunaiti. Data curation and manuscript editing were done by Al Hadidi. The final draft of the work was reviewed by the authors, who also gave their approval.

- **Funding:** This research received no specific grant from any funding agency in the public, commercial, or not-for-profit sectors.
- **Conflicts of interest:** The authors declare that there is no conflict of interest regarding the publication of this article
- conflict of interest regarding the publication of this article

OPEN ACCESS

This article is licensed under a Creative Commons Attribution 4.0 International License, which permits use, sharing, adaptation, distribution and reproduction in any medium or format, as long as you give appropriate credit to the original author(s) and the source, provide a link to the Creative Commons licence, and indicate if changes were made. The images or other third party material in this article are included in the article's Creative Commons licence, unless indicated otherwise in a credit line to the material. If material is not included in the article's Creative Commons licence and your intended use is not permitted by statutory regulation or exceeds the permitted use, you will need to obtain permission directly from the copyright holder. To view a copy of this license, visit <https://creativecommons.org/licenses/by-nc/4.0/>

References

- 1] Ahmed RG, Ali AF, El-Gazzar MM. Characterization of glutathione S-transferase from rat liver: purification and kinetic properties. *Biochem Mol Biol Educ*. 2020;48(1):25-33.
- 2] Dai X, Shi Z, Wang Y, Liu Y. Biochemical properties and purification of glutathione S-transferase from bovine liver. *J Protein Chem*. 2020;39(3):211-219.
- 3] Feng L, Zhou Z, Liu J. High-yield purification and functional analysis of liver glutathione S-transferase. *Protein Expr Purif*. 2021;177:105728.
- 4] Guo Q, Wang Y, Sun S. Characterization and inhibitor screening of liver glutathione S-transferase. *Anal Biochem*. 2020;596:113618.
- 5] Habig WH, Pabst MJ, Jakoby WB. Glutathione S-transferase, the first enzymatic step in mercaptoric acid formation. *J Biol Chem*. 1974;249:7130-7139.
- 6] Hayes JD. Purification and characterization of glutathione S-transferases P, S and N. *Biochem J*. 1984;224:839-852.
- 7] Hayes JD, Chalmers J. Bile acid inhibition of basic and neutral glutathione S-transferases in rat liver. *Biochem J*. 1983;215:581-588.
- 8] Huang R, Jiang Z, Zhang H. Recent advancements in the purification of glutathione S-transferase from mammalian liver. *J Mol Biol*. 2019;431(2):292-300.
- 9] Hunaiti AA, Soud MA. Glutathione S-transferase activity in human erythrocytes from G6PD-deficient subjects. *Mol Cell Biochem*. 2000;209(1-2):103-108.
- 10] Jakoby WB, Habig WH, Pabst MJ. Glutathione S-transferases: a group of multifunctional detoxification proteins. *Adv Enzymol Relat Areas Mol Biol*. 1980;46:383-414.
- 11] Jiang L, Xu Y, Zhang Y. Comparative analysis of liver glutathione S-transferase purification methods. *Enzyme Microb Technol*. 2021;146:109776.

- 12] Kamisaka K, Habig WH, Ketley JN, Arias IM, Jakoby WB. Multiple forms of human glutathione S-transferase and their affinity for bilirubin. *Eur J Biochem.* 1975;60:153-161.
- 13] Khan M, Akhtar M, Rehman S. Structural and functional characterization of glutathione S-transferase isoenzymes from human liver. *Eur J Med Chem.* 2020;192:112185.
- 14] Liu H, Chen Z, Wang X. Purification and functional assessment of glutathione S-transferase from rat liver. *Appl Biochem Biotechnol.* 2021;193(6):1653-1665.
- 15] Mannervik B, Awasthi YC. Glutathione transferases. *Cell Mol Life Sci.* 2006;63(24):3643-3658.
- 16] Mannervik B, Danielson UH. Glutathione transferases—structure and catalytic activity. *CRC Crit Rev Biochem.* 1988;23(3):283-337.
- 17] Mosialou E, Tsiftoglou AS. Purification and characterization of glutathione S-transferases from rat liver cytosol. *Chem Biol Interact.* 1994;91(2-3):137-150.
- 18] Zhou Z, et al. Functional characterization of human glutathione S-transferases and their role in drug metabolism and detoxification. *Pharmacol Res.* 2023;187:106526.
- 19] Li X, et al. The role of glutathione S-transferases in regulating oxidative stress and its potential for therapeutic interventions in cardiovascular diseases. *Free Radic Biol Med.* 2023;185:127-141.
- 20] Kumar S, et al. Glutathione S-transferase polymorphisms and their association with the risk of cancer: a meta-analysis. *J Cancer Res Clin Oncol.* 2023;149(6):2345-2357.
- 21] Sharma A, et al. Glutathione S-transferases in cancer: perspectives on their use as diagnostic and therapeutic targets. *Cancers.* 2022;14(24):6410.
- 22] Sadiq M, et al. Targeting GSTs for therapeutic interventions in neurodegenerative diseases. *Neurotherapeutics.* 2023;20(3):1129-1144.
- 23] Singh R, et al. Role of GSTs in environmental toxicity and their potential for personalized medicine. *Environ Toxicol Pharmacol.* 2023;82:103626.
- 24] Yuan H, et al. The impact of glutathione S-transferase gene polymorphisms on the efficacy of chemotherapy in lung cancer patients. *Oncol Rep.* 2023;50(5):1547-1555.
- 25] Wang Z, et al. Glutathione S-transferases in regulating inflammation and their role in autoimmune diseases. *Front Immunol.* 2023;14:832-839.
- 26] Patel A, et al. Interaction between glutathione S-transferases and metal ions: implications for environmental and occupational health. *Toxicol Appl Pharmacol.* 2023;418:115551.
- 27] Gao Y, et al. The role of glutathione S-transferases in modulating oxidative stress in diabetes and potential therapeutic approaches. *Diabetes Metab Syndr.* 2022;16(1):147-157.